

THE INUM.

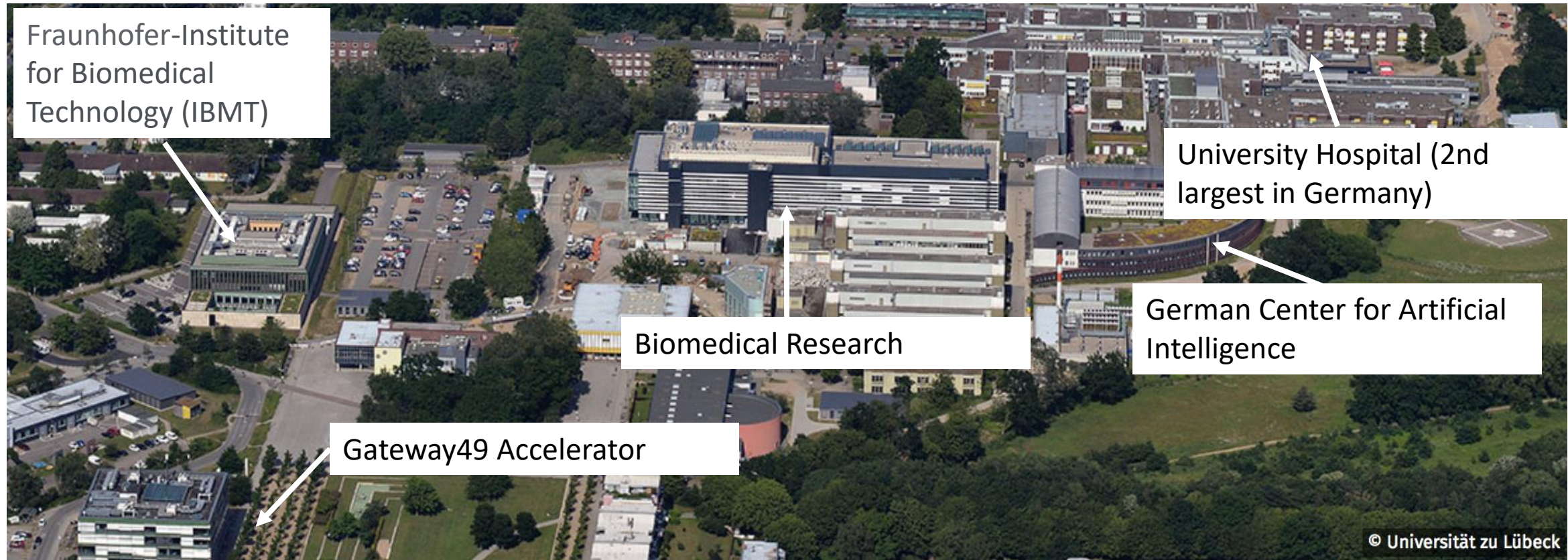
NUTRITION. METABOLISM. IMMUNITY.

16.02.2022

Nutritional Medicine @ Hanse Innovation Campus

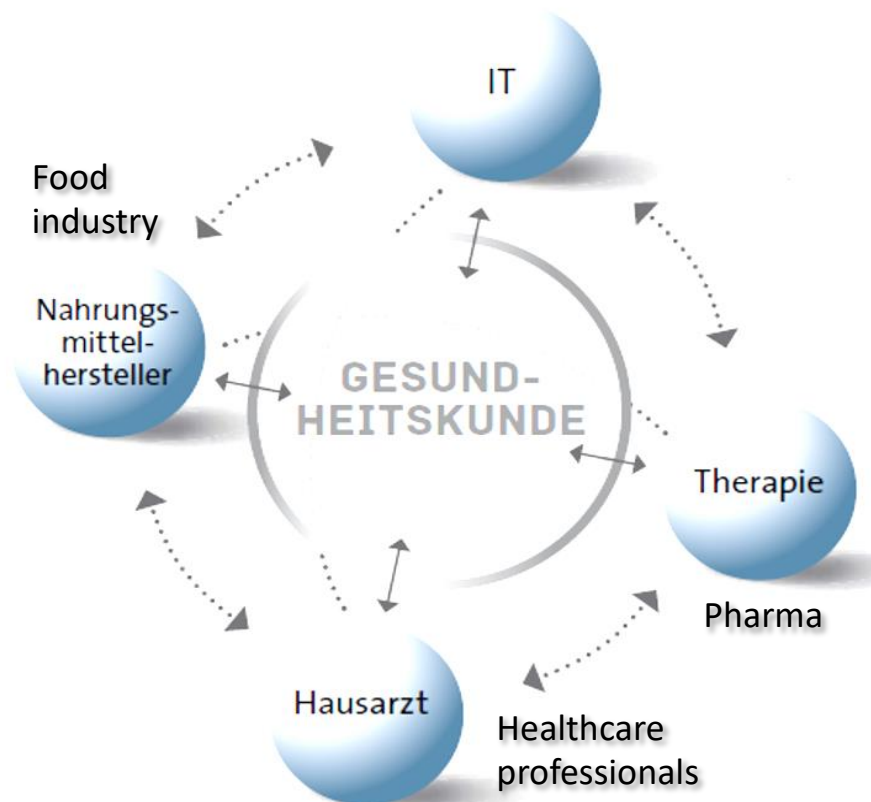
- www.the-inum.com
- https://www.uksh.de/Ernaehrungsmedizin_Luebeck/

LIFE SCIENCE INNOVATION HUB @ UNIVERSITY OF LUEBECK, GERMANY



- Life-Science University with focus on biomedical research & technology, medical informatics and precision medicine
- Leading in teaching medicine (ranked among Top 3 Universities)
- The INUM is the bridge between medicine and natural science organizing the universities human biology study program/ nutritional science program

Future of health needs to integrate food & nutrition sector!



NEWTRITION X Thinktank der foodREGIO



LEADERSHIP TEAM

KPI:



Christian Sina

MD

Professor and Chair of
Nutritional Medicine



Download CV



Stefanie Derer

PhD

Head of Molecular
Gastroenterology



Download CV



Martin Smollich

PhD

Head of
Pharmaconutrition



Download CV



Marc Ehlers

PhD

Head of Immunology



Download CV

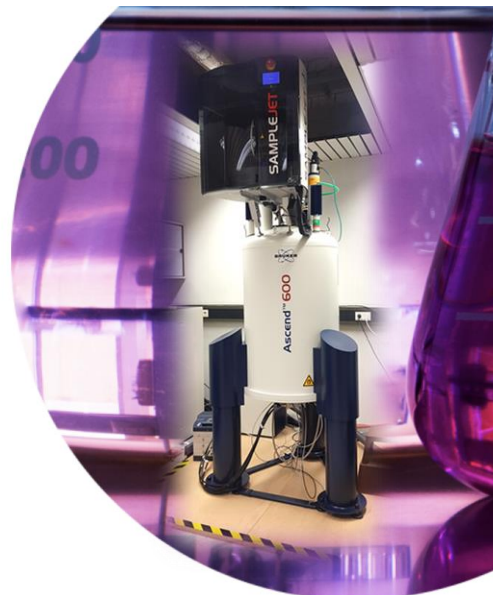
- founded in 2016
- >100 publications
- >15 Mio € fundings
- 39 researchers
- 220 students/ 90 alumni
- >1000 patients (p.a.)
- >15 int. collaborations
- high media coverage

Compound Validation Platform

The core facility "Compound Validation Platform" provides a broad spectrum of state-of-the-art techniques to screen modes of actions of distinct compounds on intestinal epithelial cell function in mouse models, 2D-cell culture or in 3D-organoid cultures.

✉ stefanie.derer@uni-luebeck.de

LEARN MORE →



**FROM MOLECULE
TO TREATMENT**



Clinical Trial Unit

The INUM Clinical Trial Unit (CTU) provides an excellent infrastructure for both experimental proof of concept studies and early phase clinical trials.

✉ christian.sina@uni-luebeck.de

LEARN MORE →

References:



Rousselot

Beiersdorf



Martin Smollich @ErnMedBlog · 20. Dez. 2019
 So geht das Jahr bei #NutriMedHL gut gelaunt zuende: mit einem exzellent absolvierten Kolloquium von Valentin Reichenbach. 😊 Herzlichen Glückwunsch und danke an Dr. Eckard Jantzen von #GALALaboratories für die hervorragende Kooperation! 🤝 Science meets industry at its best.



3 8

Christian Sina
 Gastroenterologist & Director, Fresenius Kabi Professor of Nutritional Med...
 1mo · Edited

Top student evaluation!
 "Scientific Writing in Nutritional Medicine" was awarded as the best... see more

Das ist die beliebteste Lehrveranstaltung



Martin Smollich @ErnMedBlog · 5. Nov. 2019
 Gibt es prädiktive Marker für die Wirksamkeit einer low-#FODMAP-Diät beim #Reizdarmsyndrom? Unsere Absolventin Julia Göbel hat das erstmals in ihrer Bachelorarbeit untersucht - mit äußerst spannenden Ergebnissen! 🤩 Jetzt muss nur noch publiziert werden... 😊 #NutriMedHL #rds

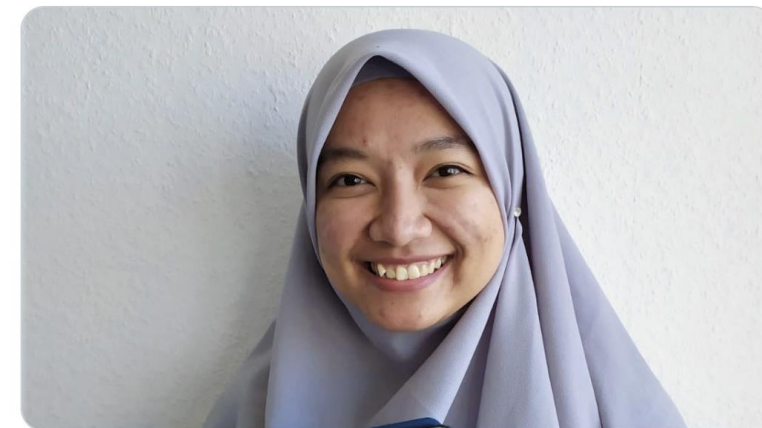


2 14

Universität Lübeck @UniLuebeck · 9. Juli 2019
 Die Studierenden der Uni Lübeck haben ihre Stimme abgegeben u. ihre Vorlesungen und Seminare bewertet. Das beste Ergebnis hat der Pflichtkurs Lebensmittelsicherheit von Prof. Martin Smollich (@ErnMedBlog) erhalten: eine 1,0! Herzlichen Glückwunsch! uni-luebeck.de/aktuelles/nach...



Martin Smollich @ErnMedBlog · 10. Mai
 Internationale Bachelorarbeit bei uns am Institut abgeschlossen: Herzlichen Glückwunsch an Putri Marahani zur erfolgreichen Feldstudie zum Einfluss von #Ernährung auf die Entwicklung von Kindern in Sumatra! 🌟 #NutriMedHL #stunting uni-luebeck.de/forschung/aktu...



Martin Smollich @ErnMedBlog · 18. Nov. 2019
 Auch bei uns am Institut wird zum diesjährigen #Nobelpreis-Thema #Hypoxie geforscht! 🧪 Hier z.B. von unserer Masterandin Annika Raschdorf, die das Verhalten von Tumorzellen unter Sauerstoffmangel untersucht. 🤩 #NutriMedHL

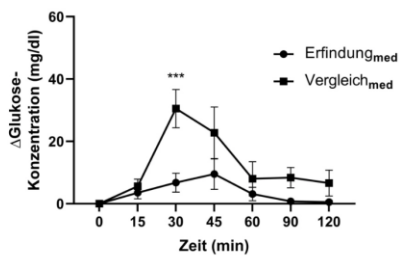


1 11

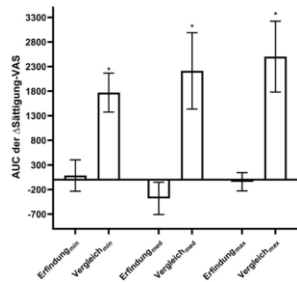


Bengt Scharfshwerdt-Otto | info@frubeen.de | www.frubeen.de

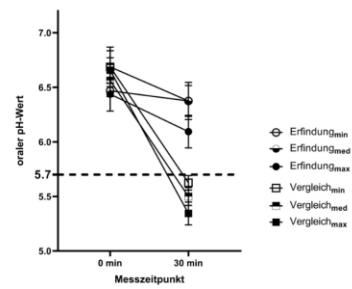
Reduzierte postprandiale Glukoseantwort



Reduzierte postprandiale Sättigungsreaktion



Keine Senkung des oralen pH auf unter 5.7



Vergleich zu Konkurrenzprodukten

	Fresubin Energy	Fresubin Diben	Frubeen Complete	Fortimel Protein	Fortimel Pulver
Standardtrinknahrung	Green	Green	Green	Green	Green
zahnfreundlich	Orange	Orange	Green	Orange	Orange
niedrig-glykämisch	Orange	Green	Green	Orange	Orange
high-protein	Orange	Orange	Green	Green	Orange
dünflüssig	Orange	Orange	Green	Orange	Orange



Frubeen™

PERSONALIZED NUTRITION BY THE-INUM IN MEDIA







PRECISION
NUTRITION

IMPROVING
METABOLISM

THE INUM.

CONTROLLING
IMMUNITY

Food Data

Health Data



Composition



Production



Preparation



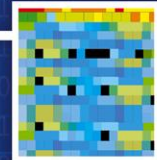
AI LAB

ALGORITHMS

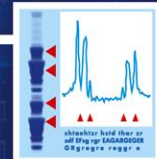
Anamnesis (App)



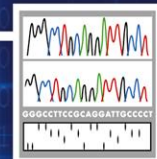
Microbiome



Metabolome



DNA Epigenetic



Sensors



Personalised Nutrition Recommendation

Personalised Nutritional Medicine

Stratified Food Development

NUTRITIONAL PHENOMICS CENTER: STATE-OF-THE-ART TECHNOLOGY

- **USP:** Combining of high-end **omics-technologies** + **wearables** + **food information**
- Advanced data science and AI application as part of the German Center of Artificial Intelligence



Personalizing Nutritional Medicine With the Power of NMR

[Download PDF Copy](#)[View Supplier Profile](#)

Sponsored Content by [Bruker BioSpin - NMR, EPR and Imaging](#)

Jun 28 2019

Thought Leaders

Christian Sina
Professor of Nutritional Medicine
University of Lübeck



- founded in 2019
- operated by the INUM & Institute of Chemistry and Metabolomics, University of Luebeck
- 2 x 600 MHz NMR Metabolomics Scanner; 1 x 400 MHz NMR Food Screener; International IvDR standard, HPLC + LC/GC -MS Division, Deep Sequencing platform. Molecular Genetics
- Sensor Lab + Clinical Trial Center



- **SENSE** - Systemische ErnähruNgSmEdizin
- **KI-Biosense:** KI basierte Sensorik zum Nachweis von biogenen Amininen in Frischeprodukten
- **Tagging Triggers:** AI based Identification of trigger & symptoms
- **INDICATE FH ImproviNg DiagnostiCs And ThErapy of Food Hypersensitivity**
- **OUTLIVE-CRC:** Improving prognosis and quality of life of young CRC patients: Tertiary prevention via multi-marker models, nutrition and socio-medical apps
- **STANCE4HEALTH** - Smart Technologies for personAlised Nutrition and Consumer Engagement

Damp Stiftung



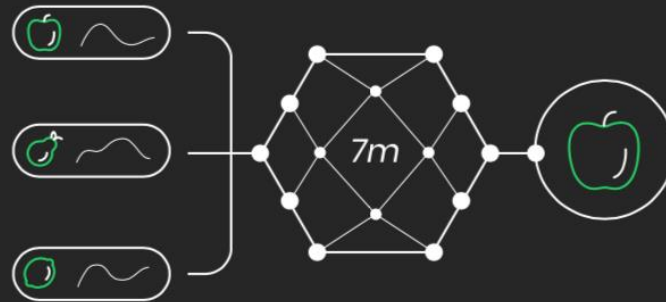
SOLUTION

A 2-week program powered by science, deep technology and data



PROGRAM & SENSOR

2-week test phase with biofeedback from symptom and food diary + CGM sensor



AI ANALYSIS

Analysis with patent-pending algorithms, trained on more than 7m datapoints



PERSONALISED REPORT

Report with recommendations and support phase to adjust diet and lifestyle

THE INUM.

NUTRITION. METABOLISM. IMMUNITY.

Thank You!

<https://www.linkedin.com/in/christian-sina-ba1667163/>
www.the-inum.com
https://www.uksh.de/Ernaehrungsmedizin_Luebeck/

